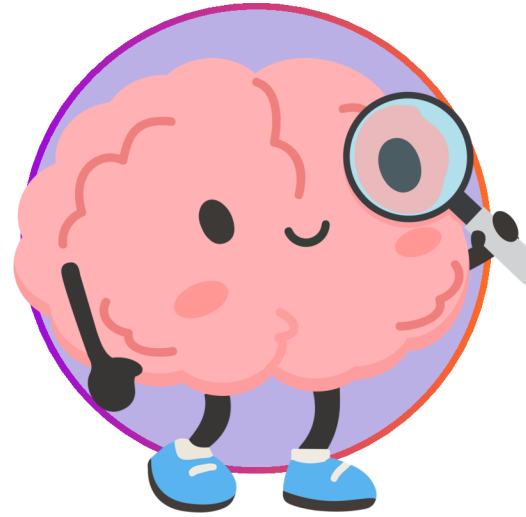


Brain Health CHECKLIST



Is it memory loss, or is it a treatable medical condition? Use this checklist to ensure your doctor runs the "Big Three" rule-out tests.



Can we check my **B12 levels**? I want to rule out a vitamin deficiency as a cause for my confusion.



Could my thyroid be sluggish? I'd like a **TSH test** to see if a metabolic imbalance is affecting my thinking.



Since this confusion started quickly, can we rule out a silent **Urinary Tract Infection (UTI)**?
